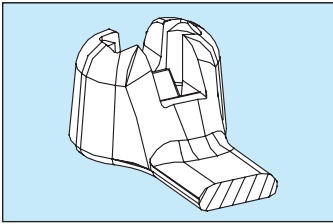


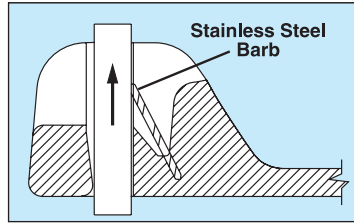
**DOME-TOP™ Barb Ty Cable Tie Features/Benefits**

**1. Dome-Top Head**



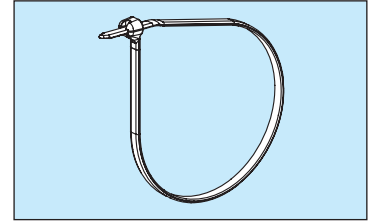
- Unique patented design
- Rounded smooth edges
- No irritation to installer's hands

**2. Stainless Steel Barb**



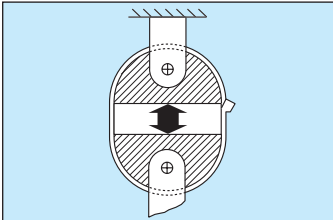
- Made of 316 corrosion resistant stainless steel
- Provides consistent performance and reliability for users who prefer a cable tie with a metal barb
- Infinitely adjustable for tight bundles through its entire bundle range

**3. Low Threading Force**



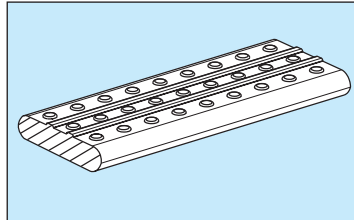
- Reduces installer fatigue
- Increases productivity

**4. High Tensile Strength**



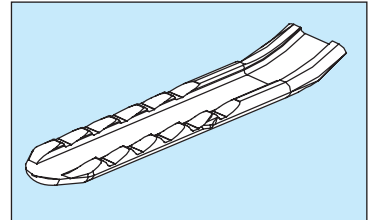
- Exceeds industry and Aerospace Standard SAE (AS23190) standards
- Available in four loop tensile strengths from 80N to 534N to provide a wide selection

**5. Anti-Slip Strap Body**



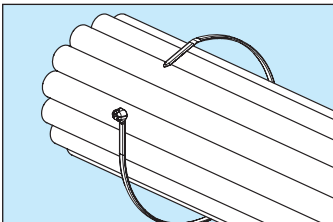
- Ribbed and stippled strap body prevents axial and lateral movement

**6. Finger Tip Grip**



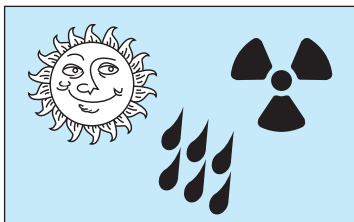
- Exclusively designed finger grip to assure positive grip during threading of the tie

**7. Curved Tip**



- Orients tip toward head to speed installation; lowers installed cost
- Faster initial threading
- Easier to pick up from flat surfaces
- Only applies to M, I and S ties

**8. Material/Size Availability**

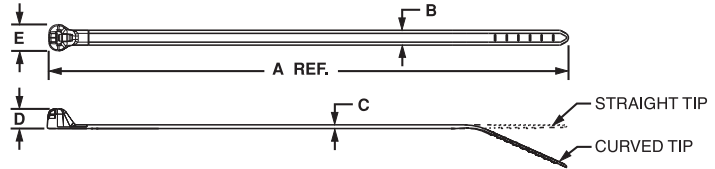


- Available in lengths from 102mm to 780mm to meet a variety of applications
- Several materials available for special environments: Natural nylon 6.6, weather resistant black nylon 6.6, heat stabilised nylon 6.6 and a variety of colours

## DOME-TOP™ Barb Ty Cable Ties



- Available in Miniature, Intermediate, Standard and Light-Heavy cross sections
- Bundle diameters up to 229mm
- Available in natural, weather resistant and heat stabilised nylon and a variety of colours
- Tool or hand installed



Part Number	Length A mm	Width B mm	Thickness C mm	Head Height D mm	Head Width E mm	Max. Bundle Dia. mm	Min. Loop Tensile Str. N	Recommended PANDUIT Installation Tool	Std. Pkg. Qty.	Std. Ctn. Qty.
<b>Miniature Cross Section</b>										
BT1M-C	102	2.4	0.9	4.0	4.4	23	80	GTS, GS2B, PTS, PPTS, STS2	100	1000
BT1.5M-C	160	2.4	1.2	4.0	4.6	38	80		100	1000
BT2M-C	201	2.4	1.2	4.0	4.6	51	80		100	1000
BT4M-C	361	2.4	1.2	4.0	4.6	102	80		100	1000
<b>Intermediate Cross Section</b>										
BT1.5I-C	155	3.6	1.0	4.7	6.3	38	178	GTS, GS2B, PTS, PPTS, STS2	100	1000
BT2I-C	203	3.6	1.0	4.7	6.3	51	178		100	1000
BT3I-C	287	3.6	1.2	4.7	6.3	76	178		100	1000
BT4I-C	363	3.6	1.2	4.7	6.3	102	178		100	1000
<b>Standard Cross Section</b>										
BT2S-C	203	4.7	1.2	5.6	8.1	51	222	GTS, GS2B, GTH, GS4H, PTH, PTS, PPTS, STS2, STH2	100	1000
BT3S-C	305	4.7	1.3	5.6	8.1	76	222		100	1000
BT4S-C	384	4.7	1.3	5.6	8.1	102	222		100	1000
<b>Light-Heavy Cross Section (Straight Tip)</b>										
BT2LH-L	221	7.0	1.7	8.1	13.2	51	534	GTH, GS4H, GS4EH, PTH, PPTEH, STH2, ST2EH	50	500
BT3LH-L	300	7.0	1.7	8.1	13.2	76	534		50	500
BT4LH-L	378	7.0	1.7	8.1	13.2	102	534		50	500
BT5LH-L	460	7.0	1.7	8.1	13.2	127	534		50	500
BT6LH-L	538	7.0	1.7	8.1	13.2	152	534		50	500
BT7LH-L	620	7.0	1.7	8.1	13.2	178	534		50	500
BT8LH-L	699	7.0	1.7	8.1	13.2	203	534		50	500
BT9LH-L	780	7.0	1.7	8.1	13.2	229	534		50	500



Mulder-Hardenberg B.V., The Netherlands  
Tel.: +31 (0)23 - 531 91 84  
infonl@m-h.biz

Mulder-Hardenberg N.V., Belgium  
Tel.: +32 (0)3 - 660 13 20  
infofob@m-h.biz

Mulder-Hardenberg GmbH, Germany  
Tel.: +49 (0)6192 - 97 91 85  
infofod@m-h.biz

www.mulder-hardenberg.com

## *DOME-TOP™* Barb Ty Cable Ties



Side View

Front View



Except 'LH-0' Ties

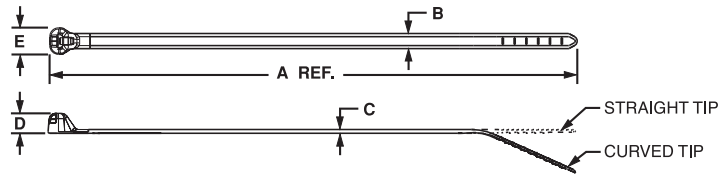


Except 'LH-0' Ties



Except 'LH-0' Ties

- Available in Miniature, Intermediate, Standard and Light-Heavy cross sections
- Bundle diameters up to 229mm
- Weather resistant nylon has greater resistance to ultraviolet light which damages natural nylon



Part Number	Length A mm	Width B mm	Thickness C mm	Head Height D mm	Head Width E mm	Max. Bundle Dia. mm	Min. Loop Tensile Str. N	Recommended <i>PANDUIT</i> Installation Tool	Std. Pkg. Qty.	Std. Ctn. Qty.
<b>Miniature Cross Section</b>										
BT1M-C0	102	2.4	0.9	4.0	4.4	23	80	GTS, GS2B, PTS, PPTS, STS2	100	1000
BT1.5M-C0	160	2.4	1.2	4.0	4.6	38	80		100	1000
BT2M-C0	201	2.4	1.2	4.0	4.6	51	80		100	1000
BT4M-C0	361	2.4	1.2	4.0	4.6	102	80		100	1000
<b>Intermediate Cross Section</b>										
BT1.5I-C0	155	3.6	1.0	4.7	6.3	38	178	GTS, GS2B, PTS, PPTS, STS2	100	1000
BT2I-C0	203	3.6	1.0	4.7	6.3	51	178		100	1000
BT3I-C0	287	3.6	1.2	4.7	6.3	76	178		100	1000
BT4I-C0	363	3.6	1.2	4.7	6.3	102	178		100	1000
<b>Standard Cross Section</b>										
BT2S-C0	203	4.7	1.2	5.6	8.1	51	222	GTS, GS2B, GTH, GS4H, PTH, PTS, PPTS, STS2, STH2	100	1000
BT3S-C0	305	4.7	1.3	5.6	8.1	76	222		100	1000
BT4S-C0	384	4.7	1.3	5.6	8.1	102	222		100	1000
<b>Light-Heavy Cross Section (Straight Tip)</b>										
BT2LH-L0	221	7.0	1.7	8.1	13.2	51	534	GTH, GS4H, GS4EH, PPTEH, PTH, STH2, ST2EH	50	500
BT3LH-L0	300	7.0	1.7	8.1	13.2	76	534		50	500
BT4LH-L0	378	7.0	1.7	8.1	13.2	102	534		50	500
BT5LH-L0	460	7.0	1.7	8.1	13.2	127	534		50	500
BT6LH-L0	538	7.0	1.7	8.1	13.2	152	534		50	500
BT7LH-L0	620	7.0	1.7	8.1	13.2	178	534		50	500
BT8LH-L0	699	7.0	1.7	8.1	13.2	203	534		50	500
BT9LH-L0	780	7.0	1.7	8.1	13.2	229	534		50	500



Mulder-Hardenberg B.V., The Netherlands  
Tel.: +31 (0)23 - 531 91 84  
info1@m-h.biz

Mulder-Hardenberg N.V., Belgium  
Tel.: +32 (0)3 - 660 13 20  
infoe@m-h.biz

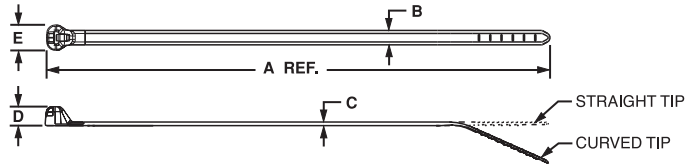
Mulder-Hardenberg GmbH, Germany  
Tel.: +49 (0)6192 - 97 91 85  
info@de@m-h.biz

www.mulder-hardenberg.com

## DOME-TOP™ Barb Ty Cable Ties — Heat Stabilised



- Available in Miniature, Intermediate, Standard, and Light-Heavy cross section
- Bundle diameters up to 102mm
- Temperature rating: -40°C to 115°C

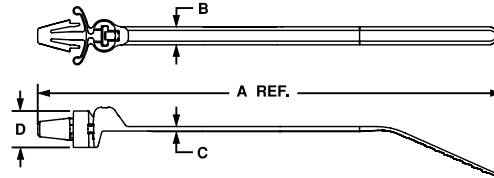


Part Number	Length A mm	Width B mm	Thickness C mm	Head Height D mm	Head Width E mm	Max. Bundle Dia. mm	Min. Loop Tensile Str. N	Recommended PANDUIT Installation Tool	Std. Pkg. Qty.	Std. Ctn. Qty.
<b>Miniature Cross Section</b>										
BT1M-M39	102	2.4	0.9	4.0	4.4	23	80	GTS, GTSL, GS2B, PTS, PPTS, STS2	1000	50000
<b>Intermediate Cross Section</b>										
BT1.5I-M39	155	3.6	1.0	4.7	6.3	38	178	GTS, GTSL, GS2B, PTS, PPTS, STS2	1000	25000
<b>Standard Cross Section</b>										
BT2S-M39	203	4.7	1.2	5.6	8.1	51	222	GTS, GTSL, GS2B, GTS, GS4H, PTS, PTH, PPTS, STS2, STH2	1000	10000
BT3S-M39	305	4.7	1.3	5.6	8.1	76	222		1000	10000
BT4S-M39	384	4.7	1.3	5.6	8.1	102	222		1000	5000
<b>Light-Heavy Cross Section (Straight Tip)</b>										
BT4LH-TL39	378	7.0	1.7	8.1	13.2	102	534	GTH, GS4H, GS4EH, PTH, STH2, ST2EH	250	2500

## DOME-TOP™ Barb Ty Wing Push Mount Cable Ties

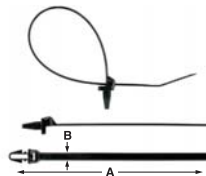


Push mount ties are used to attach a cable bundle to a surface such as a flat panel. The anchor is easily pressed into a pre-drilled hole and locks in place. The wings provide constant tension when installed, creating a stable, secure fixture and rattle-free installation.



Part Number	Length A mm	Width B mm	Thickness C mm	Head Height D mm	Nominal Hole Dia. mm	Max. Panel Thickness mm	Max. Bundle Dia. mm	Min. Loop Tensile Str. N	Recommended PANDUIT Installation Tool	Std. Pkg. Qty.	Std. Ctn. Qty.
<b>Intermediate Cross Section</b>											
BW1.5I-D	168	3.6	1.0	7.1	4.7	2.4	38	178	GTS, GS2B, PTS, PPTS, STS2	500	5000
<b>Standard Cross Section</b>											
BW2S-D	216	4.7	1.3	9.4	6.4	4.0	51	222	GTS, GS2B, GTH, GS4H, PTS, PPTS, STS2, STH2	500	5000

## DOME-TOP™ Barb Ty Push Mount Cable Ties



- Combines cable tie, mount and fastener into a single part
- The anchor is pressed into a pre-formed hole to attach a bundle to a surface
- Wingless design allows tie to be used in confined spaces

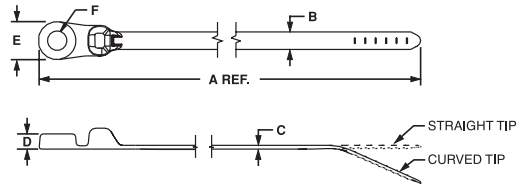


Part Number	Length A mm	Width B mm	Nominal Hole Dia. mm	Max. Panel Thickness mm	Max. Bundle Dia. mm	Min. Loop Tensile Str. N	Recommended PANDUIT Installation Tool	Std. Pkg. Qty.	Std. Ctn. Qty.
<b>Standard Cross Section</b>									
BP2S-D0	216	4.7	6.5	3.8	51	222	GTS, GTSL, GS2B, GTH, GS4H, PTS, PTH, PPTS, STS2, Sth2	500	5000

## DOME-TOP™ Barb Ty Clamp Ties



- Used to secure a bundle to another surface
- The design allows for bundling before or after screwing clamp in place
- Available in Miniature, Intermediate, Standard and Light-Heavy cross sections
- Bundle diameters up to 102mm



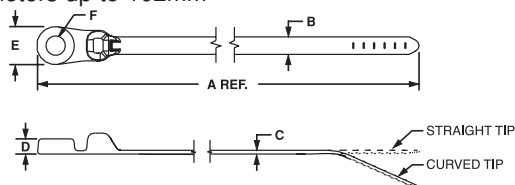
Part Number	Length A	Width B	Thickness C	Boss Height D	Boss Width E	Nominal Hole Dia. F	Screw Size	Max. Bundle Dia.	Min. Loop Tensile Str.	Recommended PANDUIT Installation Tool	Std. Pkg. Qty.	Std. Ctn. Qty.
	mm	mm	mm	mm	mm	mm		mm	mm			
<b>Miniature Cross Section</b>												
BC1M-S4-M	117	2.4	1.2	4.0	5.9	3.15	M2.5	23	80	GTS, GTSL, GS2B, PTS, PPTS, STS2	1000	50000
BC2M-S4-M	211	2.4	1.2	4.0	5.9	3.15	M2.5	51	80		1000	25000
<b>Intermediate Cross Section</b>												
BC1.5I-S8-M	168	3.6	1.0	4.2	8.4	4.57	M4	38	178	GTS, GTSL, GS2B, PTS, PPTS, STS2	1000	25000
<b>Standard Cross Section</b>												
BC2S-S10-C	216	4.7	1.3	4.1	10.2	5.2	M5	51	222	GTS, GTSL, GS2B, GTH, GS4H, PTS, PTH, PPTS, STS2, STH2	100	1000
BC3S-S10-D	318	4.7	1.3	4.1	10.2	5.2	M5	76	222		500	5000
BC4S-S10-C	396	4.7	1.3	4.1	10.2	5.2	M5	102	222		100	1000
<b>Light-Heavy Cross Section (Straight Tip)</b>												
BC4LH-S25-L	394	7.0	1.7	6.7	13.2	6.6	M6	102	534	GTH, GS4H, GS4EH, PTH, STH2, ST2EH	50	500

## DOME-TOP™ Barb Ty Clamp Ties — Weather Resistant



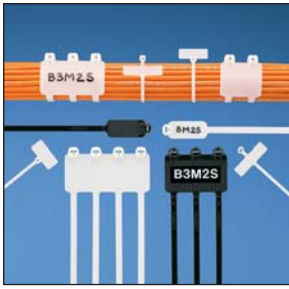
Except Light-Heavy Tie

- Used to secure a bundle to another surface
- The design allows for bundling before or after screwing clamp in place
- Available in Miniature, Intermediate, Standard and Light-Heavy cross sections
- Bundle diameters up to 102mm

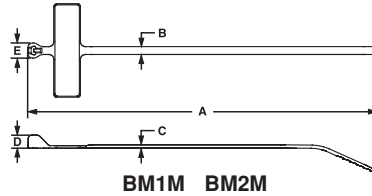


Part Number	Length A	Width B	Thickness C	Boss Height D	Boss Width E	Nominal Hole Dia. F	Metric Screw Size	Max. Bundle Dia.	Min. Loop Tensile Str.	Recommended PANDUIT Installation Tool	Std. Pkg. Qty.	Std. Ctn. Qty.
	mm	mm	mm	mm	mm	mm		mm	mm			
<b>Standard Cross Section</b>												
BC2S-S10-C0	216	4.7	1.3	4.1	10.2	5.2	M5	51	222	GTS, GS2B, GTH, GS4H, PTS, PPTS, STS2, STH2	100	1000
BC4S-S10-C0	396	4.7	1.3	4.1	10.2	5.2	M5	102	222		100	1000
<b>Light-Heavy Cross Section (Straight Tip)</b>												
BC4LH-S25-L0	394	7.0	1.7	6.7	13.2	6.6	M6	102	534	GTH, GS4H, GS4EH, PPTEH, STH2, ST2EH	50	500

**DOME-TOP™ Barb Ty Marker & Flag Ties**



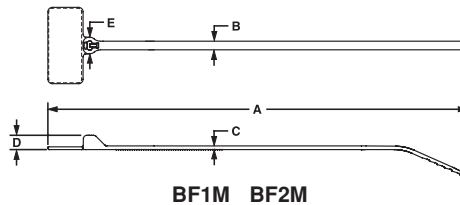
- Used to fasten and identify bundles at the same time
- They can be marked with *PANDUIT* Marker Pens
- Available in Miniature and Standard cross section
- Bundle diameters up to 102mm
- Available in natural and weather resistant nylon



Part Number	Length	Width	Thickness	Head Height	Head Width	Marker Write-On Area	Max. Bundle Dia.	Min. Loop Tensile Str.	Recommended <i>PANDUIT</i> Installation Tool	Std. Pkg. Qty.	Std. Ctn. Qty.
	A	B	C	D	E						

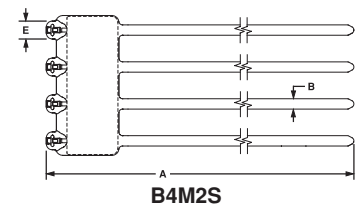
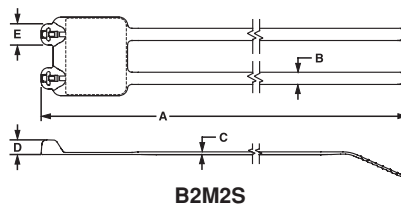
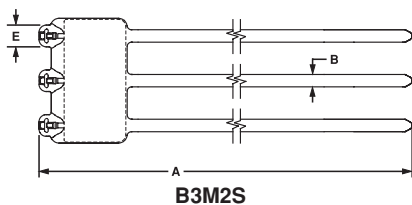
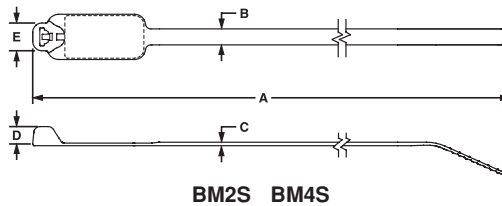
**Miniature Cross Section**

<b>BM1M-C</b>	107	2.4	1.2	4.0	4.6	7.4 x 27.7	23	80	GTS, GTSL, GS2B, PTS, PPTS, STS2	100	1000
<b>BM2M-C</b>	201	2.4	1.2	4.0	4.6	7.4 x 27.7	51	80		100	1000



**Miniature Cross Section**

<b>BF1M-C</b>	117	2.4	1.2	4.0	4.6	9.1 x 20.6	23	80	GTS, GTSL, GS2B, PTS, PPTS, STS2	100	1000
<b>BF2M-C</b>	211	2.4	1.2	4.0	4.6	9.1 x 20.6	51	80		100	1000



**Standard Cross Section**

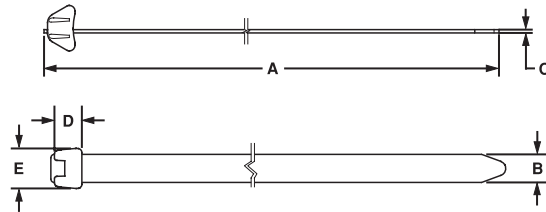
<b>BM2S-C</b>	203	4.7	1.2	5.6	8.1	12.4 x 23.1	51	222	GTS, GTSL, GS2B, GTH, GS4H, PTS, PTH, PPTS, STS2, STH2	100	1000
<b>BM4S-C</b>	384	4.7	1.3	5.6	8.1	12.7 x 54.1	102	222		100	1000
<b>B2M2S-D</b>	203	4.7	1.2	5.6	8.1	29.2 x 23.1	51	222	GTS, GTSL, GS2B, GTH, GS4H, PTS, PTH, PPTS, STS2, STH2	500	2500
<b>B3M2S-TL</b>	203	4.7	1.2	5.6	8.1	46.0 x 23.1	51	222		250	2500
<b>B4M2S-TL</b>	203	4.7	1.2	5.6	8.1	62.7 x 23.1	51	222		250	2500

Can be marked with *PANDUIT* Marker Pens or Computer Printable Labels.

**DURA-TY™ Weather Resistant Cable Ties**



- Ideal for all outdoor messenger strand applications including telephone, cable TV, traffic signals and outside plant power services
- Weather Resistant Acetal strap body and head
- Double stainless steel, Type 302, locking bars
- High tensile strength and high impact resistance
- Excellent chemical and moisture resistance
- 1112N. minimum loop tensile strength
- May be used with Stackable Aerial Cable Spacers SACS50-T100 (See page 91 & 118)



Part Number	Description	Length A	Strap Width B	Thickness C	Head Height D	Head Width E	Max. Bundle Dia. mm	Min. Loop Tensile Str. N	Recommended <i>PANDUIT</i> Installation Tool	Std. Pkg. Qty.	Std. Ctn. Qty.
		mm	mm	mm	mm	mm					
<b>Extra-Heavy Cross Section</b>											
DT4EH-L0	Cable Tie	343	12.7	1.5	12.4	18.2	98	1112	GTH, GS4EH, ST2EH	50	1000
DT8EH-Q0	Cable Tie	686	12.7	1.5	12.4	18.2	203	1112		25	500
DTRRH-LR0	15.24m reel of strapping	15,240	12.7	1.50	—	—	As needed	1112		1	20
DTHEH-Q0	Bag of 25 cable tie heads	—	—	—	12.45	18.2	—	—	—	25	500
DTKEH-0	Kit containing 15.24m reel of strapping and 25 cable tie heads	15,240	12.7	1.50	12.45	18.2	As needed	1112	GTH, GS4EH, ST2EH	1	20



Mulder-Hardenberg B.V., The Netherlands  
Tel.: +31 (0)23 - 531 91 84  
infonl@m-h.biz

Mulder-Hardenberg N.V., Belgium  
Tel.: +32 (0)3 - 660 13 20  
infobe@m-h.biz

Mulder-Hardenberg GmbH, Germany  
Tel.: +49 (0)6192 - 97 91 85  
infode@m-h.biz

www.mulder-hardenberg.com

**DOME-TOP™ Barb Ty Cable Ties**

**Part Number System (Example of BT1M-C)**

**BT**                      **1**                      **M**                      **—**                      **C**

<b>Part Description</b>	<b>Size</b>	<b>Cross Section</b>	<b>Screw Hole Size</b>	<b>Package Size</b>	<b>Colour</b>
BT = Barb Ty	Approx.	M = Miniature	(Clamp Ties Only)	Q = 25	See chart
BC = Barb Ty Clamp	Maximum	I = Intermediate	-S4 = M2.5	L = 50	below for
BF = Barb Ty Flag	Bundle	S = Standard	-S8 = M4	C = 100	colours and
BM = Barb Ty Marker	Dia. (In)	LH = Light-Heavy	-S10= M5	TL = 250	materials
BW = Barb Ty Wing		EH = Extra-Heavy	-S25= M6	D = 500	available
DT = DURA-TY™				M = 1000	
BP = Barb Ty Push Mount				LR = 15,24m	
				Reel	

Material / Colour Chart					
Material - Colour	PANDUIT Suffix*	Mil Spec Suffix**	Material - Colour	PANDUIT Suffix*	Mil Spec Suffix**
Nylon 6.6 - Natural (See Note)	✓	.9	Nylon 6.6 - Blue	.6	.6
Weather Resistant Nylon 6.6 - Black	.0	.N/A	Nylon 6.6 - Purple	.7	.7
Nylon 6.6 - Brown	.1	.1	Nylon 6.6 - Grey	.8	.8
Nylon 6.6 - Red	.2	.2	Nylon 6.6 - White	.10	.N/A
Nylon 6.6 - Orange	.3	.3	Nylon 6.6 - Grey	.14	.N/A
Nylon 6.6 - Yellow	.4Y	.4	Nylon 6.6 - Black	.20	.N/A
Nylon 6.6 - Green	.5	.5	Heat Stabilised Nylon 6.6 - Black	.30	.N/A
			Heat Stabilised Nylon 6.6 - Natural	.39	.N/A

\* Note: ✓denotes PANDUIT standard Natural Nylon 6.6 (no suffix required in part number)

\*\*Note: Mil. Spec. colour suffix per SAE AS33671 and AS33681 (formerly MS3367 and MS3368)

Standard Packaging			Bulk Packaging		
Part Number	Natural Nylon 6.6	Colour / Material Suffix	Part Number	Natural Nylon 6.6	Colour / Material Suffix
			BC1M-S4-M	✓	0
			BC2M-S4-M	✓	0
			BC1.5I-S8-M	✓	0
BC2S-S10-C	✓	0	BC2S-S10-D	✓	0
			BC3S-S10-D	✓	0
BC4S-S10-C	✓	0	BC4S-S10-D	✓	0,30
BC4LH-S25-L	✓	0	BC4LH-S25-TL	✓	0
BF1M-C	✓		BF1M-M	✓	0
BF2M-C	✓		BF2M-M	✓	0
BM1M-C	✓		BM1M-M	✓	0
BM2M-C	✓		BM2M-M	✓	0
BM2S-C	✓		BM2S-D	✓	0
BM4S-C	✓		BM4S-D	✓	0
BT1M-C	✓	0,30	BT1M-M	✓	0,1,2,3,4Y,5,6,7,8,10,30,39
BT1.5M-C	✓	0	BT1.5M-M	✓	0,30
BT2M-C	✓	0	BT2M-M	✓	0,2,3,4Y,5,6,8,30
BT4M-C	✓	0	BT4M-M	✓	0
BT1.5I-C	✓	0	BT1.5I-M	✓	0,1,2,3,4Y,5,6,7,8,10,30,39
BT2I-C	✓	0	BT2I-M	✓	0,30
BT3I-C	✓	0	BT3I-M	✓	0,30
BT4I-C	✓	0	BT4I-M	✓	0,14
BT2S-C	✓	0	BT2S-M	✓	0,1,2,3,4Y,5,6,7,8,10,20,30,39
BT3S-C	✓	0,2	BT3S-M	✓	0,30,39
BT4S-C	✓	0	BT4S-M	✓	0,2,3,4Y,5,6,7,8,10,30,39
BT2LH-L	✓	0	BT2LH-TL	✓	0
BT3LH-L	✓	0	BT3LH-TL	✓	0
BT4LH-L	✓	0	BT4LH-TL	✓	0,30,39
BT5LH-L	✓	0	BT5LH-C	✓	0
BT6LH-L	✓	0	BT6LH-C	✓	0
BT7LH-L	✓	0	BT7LH-C	✓	0
BT8LH-L	✓	0	BT8LH-C	✓	0
BT9LH-L	✓	0	BT9LH-C	✓	0
			BW1.5I-D	✓	
			BW2S-D	✓	0
			B2M2S-D	✓	0
			B3M2S-TL	✓	0
			B4M2S-TL	✓	0
			BP2S-D	✓	0
^DTHEH-Q		0			
^DTKEH		0			
^DTREH-LR		0			
^DT4EH-L		0			
^DT8EH-Q		0			

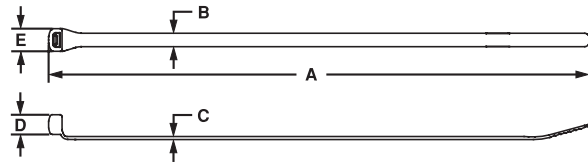
^ DURA-TY™ Weather Resistant Acetal strap body and head

**CONTOUR-TY™ Cable Ties — Nylon 6.6 and Weather Resistant Nylon 6.6**



- Unique design prevents wire and cable damage
- Low profile head avoids snags and reduces overall bundle size
- Outside teeth and smooth round edges protect cable jacket - ideal for high vibration applications
- Parallel-entry limits exposure to sharp edges and protects workers' arms/hands
- Fully enclosed head for consistent strength
- Curved tip is easy to pick up from flat surfaces, allows faster initial threading, and speeds installation
- Materials
  - Natural Nylon 6.6 material — indoor use
  - Weather Resistant Nylon 6.6 (-0) material — outdoor use
  - Heat Stabilised (-39) material is for high temperature applications — indoor use
  - Flame Retardant (-69) material has a flammability rating of UL94V-0 — indoor use

Note: UL Recognized and UL Listed except CBR3S-M69



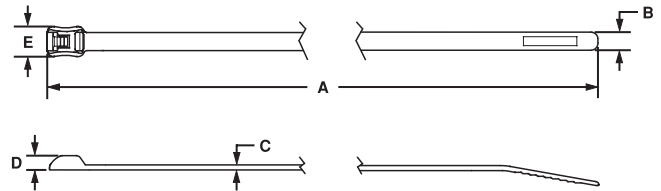
Part Number	Length A	Width B	Thickness C	Head Height D	Head Width E	Max. Bundle Dia.	Min. Loop Tensile Strength N	Recommended PANDUIT Installation Tool	Std. Pkg. Qty.	Std. Ctn. Qty.
	mm	mm	mm	mm	mm					
<b>Miniature Cross Section</b>										
CBR1M-M	104	2.5	1.0	5.3	5.0	25	80	GTS, GS2B, PTS, PPTS, STS2	1000	50000
CBR1M-M0	104	2.5	1.0	5.3	5.0	25	80		1000	50000
CBR1.5M-M	142	2.5	1.1	5.3	5.3	38	80		1000	50000
CBR1.5M-M0	142	2.5	1.1	5.3	5.3	38	80		1000	50000
CBR2M-M	183	2.5	1.1	5.3	5.3	51	80		1000	25000
CBR2M-M0	183	2.5	1.1	5.3	5.3	51	80		1000	25000
<b>Intermediate Cross Section</b>										
CBR1.5I-M	150	3.6	1.0	6.4	6.4	38	178	GTS, GS2B, PTS, PPTS, STS2	1000	25000
CBR1.5I-M0	150	3.6	1.0	6.4	6.4	38	178		1000	25000
CBR3I-M	264	3.6	1.3	6.4	6.7	76	178		1000	10000
CBR3I-M0	264	3.6	1.3	6.4	6.7	76	178		1000	10000
CBR4I-M	345	3.6	1.3	6.4	6.7	102	178		1000	10000
CBR4I-M0	345	3.6	1.3	6.4	6.7	102	178		1000	10000
<b>Standard Cross Section</b>										
CBR2S-M	193	4.8	1.1	7.1	8.4	51	222	GTS, GS2B, GTH, GS4H, PTS, PPTS, STS2, STH2	1000	10000
CBR2S-M0	193	4.8	1.1	7.1	8.4	51	222		1000	10000
CBR2S-M39	193	4.8	1.1	7.1	8.4	51	222		1000	10000
CBR3S-M	274	4.8	1.3	7.1	8.4	76	222		1000	5000
CBR3S-M0	274	4.8	1.3	7.1	8.4	76	222		1000	5000
CBR3S-M69	274	4.8	1.3	7.1	8.4	76	222		1000	5000
CBR4S-M	356	4.8	1.3	7.1	8.4	102	222		1000	5000
CBR4S-M0	356	4.8	1.3	7.1	8.4	102	222		1000	5000
<b>Heavy-Standard Cross Section</b>										
CBR2HS-D	203	6.4	1.4	8.2	9.9	51	378	GTH, GS4H, GS4EH, STH2, ST2EH	500	5000
CBR2HS-D0	203	6.4	1.4	8.2	9.9	51	378		500	5000
<b>Light-Heavy Cross Section</b>										
CBR4LH-TL	371	7.6	1.8	10.2	12.4	102	534	GTH, GS4H, GS4EH, PPTEH, STH2, ST2EH	250	2500
CBR4LH-TL0	371	7.6	1.8	10.2	12.4	102	534		250	2500
CBR6LH-C	531	7.6	1.8	10.2	12.4	152	534		100	2000
CBR6LH-C0	531	7.6	1.8	10.2	12.4	152	534		100	2000

## BELT-TY™ In-Line Cable Ties

- Head designed for no protrusion of cut-off tie
- Low profile head (35% lower than conventional 90° entry cable ties)
- Fully rounded edges on head and strap
- Rounded tip and aggressive grip
- Finger grip shaped head
- Curved tip
- Protects adjacent cables and protects workers arms and hands
- Avoids snags and reduces overall bundle size
- No sharp edges in contact with cable insulation
- Easy to grip for assembly
- Positive grip when threading tie



- Parallel-entry cable ties that thread like a belt (at 180°) with the same performance of conventional (90° entry) cable ties



### Natural Nylon 6.6

Part Number	Length A mm	Width B mm	Thickness C mm	Head Height D mm	Head Width E mm	Max. Bundle Dia. mm	Min. Loop Tensile Str. N	Recommended PANDUIT Installation Tool	Std. Pkg. Qty.	Std. Ctn. Qty.
<b>Miniature Cross Section</b>										
ILT1M-M	122	2.5	1.1	2.8	4.8	28	80	GTS, GTSL, GS2B, PTS, PPTS, STS2	1000	50000
<b>Intermediate Cross Section</b>										
ILT1.5I-M	137	3.6	1.3	3.3	6.6	35	133	GTS, GTSL, GS2B, PTS, PPTS, STS2	1000	25000
<b>Standard Cross Section</b>										
ILT2S-C	211	4.8	1.3	3.6	8.0	48	222	GTS, GTSL, GS2B, GTH, GS4H, PTS, PTH, PPTS, STS2, STH2	100	1000
ILT3S-C	292	4.8	1.3	3.6	8.0	76	222		100	1000
ILT4S-C	373	4.8	1.3	3.6	8.0	102	222		100	1000
<b>Light-Heavy Cross Section</b>										
ILT4LH-TL	376	7.6	1.9	6.4	13.1	102	534	GTH, GS4H, GS4EH, PTH, STH2, ST2EH	250	2500
ILT6LH-C	538	7.6	1.9	6.4	13.1	152	534		100	2000

### Weather Resistant Nylon 6.6

Part Number	Length A mm	Width B mm	Thickness C mm	Head Height D mm	Head Width E mm	Max. Bundle Dia. mm	Min. Loop Tensile Str. N	Recommended PANDUIT Installation Tool	Std. Pkg. Qty.	Std. Ctn. Qty.
<b>Miniature Cross Section</b>										
ILT1M-M0	122	2.50	1.1	2.8	4.8	28	80	GTS, GTSL, GS2B, PTS, PPTS, STS2	1000	50000
<b>Intermediate Cross Section</b>										
ILT1.5I-M0	137	3.6	1.3	3.3	6.6	35	133	GTS, GTSL, GS2B, PTS, PPTS, STS2	1000	25000
<b>Standard Cross Section</b>										
ILT2S-C0	211	4.8	1.3	3.6	8.0	48	222	GTS, GTSL, GS2B, GTH, GS4H, PTS, PTH, PPTS, STS2, STH2	100	1000
ILT3S-C0	292	4.8	1.3	3.6	8.0	76	222		100	1000
ILT4S-C0	373	4.8	1.3	3.6	8.0	102	222		100	1000
<b>Light-Heavy Cross Section</b>										
ILT4LH-TL0	376	7.6	1.9	6.4	13.1	102	534	GTH, GS4H, GS4EH, PTH, STH2, ST2EH	250	2500
ILT6LH-C0	538	7.6	1.9	6.4	13.1	152	534		100	2000



Mulder-Hardenberg B.V., The Netherlands  
Tel.: +31 (0)23 - 531 91 84  
info1@m-h.biz

Mulder-Hardenberg N.V., Belgium  
Tel.: +32 (0)3 - 660 13 20  
infoe@m-h.biz

Mulder-Hardenberg GmbH, Germany  
Tel.: +49 (0)6192 - 97 91 85  
infoe@m-h.biz

www.mulder-hardenberg.com

## IN-LINE Cable Ties for Playground Applications

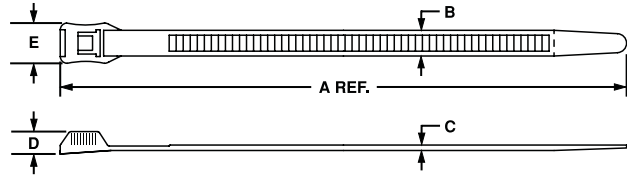


Colours can be used to install foam padding for playground applications.



UV Black can be used in any outdoor applications

- Wide tie body and high tensile strength are ideal for any application including playground equipment
- For playground installations, the head is inverted and the body is captured between the tie and foam for safety
- Flexible, easy to handle and easily installed without special tools
- Available in 15 UV weather resistant colours for colour coordination and UV stability



Part Number	Description	Length	Width	Thickness	Head Height	Head Width	Max. Bundle Dia.	Min. Loop Tensile Str.	Std. Pkg. Qty.	Std. Ctn. Qty.
		A	B	C	D	E				
Cable Tie Colors		mm	mm	mm	mm	mm	mm	N		
IT9100-CUV2	UV Red	358	8.9	1.7	7.6	14.1	100	500	100	1000
IT9100-CUV4Y	UV Yellow	358	8.9	1.7	7.6	14.1	100	500	100	1000
IT9100-CUV6	UV Dark Blue	358	8.9	1.7	7.6	14.1	100	500	100	1000
IT9100-CUV6A	UV Light Blue	358	8.9	1.7	7.6	14.1	100	500	100	1000
IT9100-CUV7A	UV Purple	358	8.9	1.7	7.6	14.1	100	500	100	1000
IT9100-CUV8	UV Silver	358	8.9	1.7	7.6	14.1	100	500	100	1000
IT9100-CUV16B	UV Pink	358	8.9	1.7	7.6	14.1	100	500	100	1000
IT9115-CUV2	UV Red	389	8.9	1.7	7.6	14.1	115	550	100	1000
IT9115-CUV2A	UV Bright Red	389	8.9	1.7	7.6	14.1	115	550	100	1000
IT9115-CUV4Y	UV Yellow	389	8.9	1.7	7.6	14.1	115	550	100	1000
IT9115-CUV4A	UV Butterscotch	389	8.9	1.7	7.6	14.1	115	550	100	1000
IT9115-CUV5A	UV Green	389	8.9	1.7	7.6	14.1	115	550	100	1000
IT9115-CUV5B	UV Hunter Green	389	8.9	1.7	7.6	14.1	115	550	100	1000
IT9115-CUV6	UV Dark Blue	389	8.9	1.7	7.6	14.1	115	550	100	1000
IT9115-CUV6A	UV Light Blue	389	8.9	1.7	7.6	14.1	115	550	100	1000
IT9115-CUV6B	UV Cobalt Blue	389	8.9	1.7	7.6	14.1	115	550	100	1000
IT9115-CUV7A	UV Purple	389	8.9	1.7	7.6	14.1	115	550	100	1000
IT9115-CUV8	UV Silver	389	8.9	1.7	7.6	14.1	115	550	100	1000
IT9115-CUV11	UV Teal	389	8.9	1.7	7.6	14.1	115	550	100	1000
IT9115-CUV16B	UV Pink	389	8.9	1.7	7.6	14.1	115	550	100	1000
IT9115-CUV18	UV Tan	389	8.9	1.7	7.6	14.1	115	550	100	1000
<b>Black Cable Ties</b>										
IT940-C0	Black	173	8.9	1.7	7.6	14.1	40	550	100	1000
IT965-C0	Black	257	8.9	1.7	7.6	14.1	65	550	100	1000
IT9100-C0	Black	358	8.9	1.7	7.6	14.1	100	550	100	1000
IT9115-C0	Black	389	8.9	1.7	7.6	14.1	115	550	100	1000
IT9150-C0	Black	511	8.9	1.9	8.1	14.1	150	550	100	1000
IT9250-C0	Black	838	8.9	1.9	8.1	14.1	250	550	100	1000

**Parallel Entry Cable Ties**

**Part Number System (Example of ILT1M-M)**

<b>ILT</b>	<b>1</b>	<b>M</b>	<b>—</b>	<b>M</b>	
<b>Part Description</b> CBR = <i>CONTOUR-TY™</i> ILT = <i>BELT-TY™</i> In-Line Tie	<b>Size</b> Approx. Maximum Bundle Dia. (In)	<b>Cross Section</b> M = Miniature I = Intermediate S = Standard HS = Heavy-Standard LH = Light-Heavy		<b>Package Size</b> C = 100 TL = 250 D = 500 M = 1000	<b>Colour</b> See chart below for colours and materials available
<b>ILT</b>	<b>9</b>	<b>40</b>	<b>—</b>	<b>C</b>	
<b>Part Description</b> IT = IN-LINE Tie	<b>Size</b> Approx. Width mm	<b>Cross Section</b> Approx. Maximum Bundle Diameter mm		<b>Package Size</b> C = 100	<b>Colour</b> See chart below for colours and materials available

Material / Colour Chart					
Material - Colour	PANDUIT Suffix*	Mil Spec Suffix**	Material - Colour	PANDUIT Suffix*	Mil Spec Suffix**
Nylon 6.6 - Natural (See Note)	✓	.9	Ultraviolet Hunter Green	UV5B	.N/A
Weather Resistant Nylon 6.6 - Black	.0	.N/A	Ultraviolet Dark Blue	UV6	.N/A
Ultraviolet Red	UV2	.N/A	Ultraviolet Light Blue	UV6A	.N/A
Ultraviolet Bright Red	UV2A	.N/A	Ultraviolet Cobalt Blue	UV6B	.N/A
Ultraviolet Yellow	UV4Y	.N/A	Ultraviolet Purple	UV7A	.N/A
Ultraviolet Butterscotch	UV4A	.N/A	Ultraviolet Silver	UV8	.N/A
Ultraviolet Green	UV5A	.N/A	Ultraviolet Teal	UV11	.N/A
			Ultraviolet Pink	UV16B	.N/A
			Ultraviolet Tan	UV18	.N/A

\* Note: ✓ denotes PANDUIT standard Natural Nylon 6.6 (no suffix required in part number)

\*\*Note: Mil. Spec. colour suffix per SAE AS33671 and AS33681 (formerly MS3367 and MS3368)

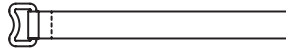
**Part Number Availability List**

Standard Packaging			Bulk Packaging		
Part Number	Natural Nylon 6.6	Colour / Material Suffix	Part Number	Natural Nylon 6.6	Colour / Material Suffix
			CBR1M-M	✓	0
			CBR1.5M-M	✓	0
			CBR2M-M	✓	0
			CBR1.5I-M	✓	0
			CBR3I-M	✓	0
			CBR4I-M	✓	0
			CBR2S-M	✓	0
			CBR3S-M	✓	0
			CBR4S-M	✓	0
			CBR2HS-D	✓	0
			CBR4LH-TL	✓	0
			CBR6LH-C	✓	0
			ILT1M-M	✓	0
			ILT1.5I-M	✓	0
ILT2S-C	✓	0	ILT2S-M	✓	0
ILT3S-C	✓	0	ILT3S-M	✓	0
ILT4S-C	✓	0	ILT4S-M	✓	0
			ILT4LH-TL	✓	0
			ILT6LH-C	✓	0
			IT940-C		0
			IT965-C		0
			IT9100-C		0,UV2,UV4Y,UV4A,UV5A,UV5B,UV6,UV6A,UV6B,UV7A,UV8,UV11,UV16B
			IT9115-C		0,UV2,UV2A,UV4Y,UV4A,UV5A,UV5B,UV6,UV6A,UV6B,UV7A,UV8,UV11,UV16B,UV18
			IT9150-C		0
			IT9250-C		0

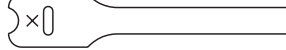
**TAK-TY™ Hook & Loop Cable Ties**

- Releasable and reusable hundreds of times
- No risk of over tensioning and damaging high performance cabling
- No installation tool needed
- No waste — excess can be wrapped around bundle
- Cinch ties — Pass hook portion through plastic cinch ring. Pull end of tie against ring to tension. Secure hook portion against loop portion of tie body to fasten
- Loop and Strip ties have hooks on one side and loops on the other, so it adheres to itself; wrap around bundle and secure end of tie on the body
- Complementary mounts available (see page 99)
- Loop and Strip ties (in black and maroon) are UL Listed for use in air handling spaces

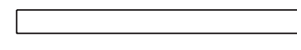
**HLC Series**



**HLT/HLTP Series**



**HLS/HLSP/HLM Series**



**Cinch Ties — Cinch ring provides extra strength and bundle tightness**

Part Number	Length	Width	Thickness	Head Width	Min. Bundle Diameter	Max. Bundle Dia.	Min. Loop Tensile Str.*	Std. Pkg. Qty.	Std. Ctn. Qty.
	mm	mm	mm	mm	mm	mm	N		
HLC3S-X0	305	19.1	2.5	27.9	51	76	222	10	100
HLC5S-X0	457	19.1	2.5	27.9	76	127	222	10	100

**Loop Ties — Slot allows for pre-wrapping of bundles**

HLT2I-X0	203	12.7	2.5	25.4	6	49	178	10	100
HLT3I-X0	305	12.7	2.5	25.4	6	81	178	10	100

**UL Listed Loop Ties\*\***

HLTP2I-X12	203	12.7	2.5	25.4	6	49	178	10	100
HLTP3I-X12	305	12.7	2.5	25.4	6	81	178	10	100

**Strip Ties — Rolls perforated in convenient strips**

HLS1.5S-X0	152	19.1	2.5	—	6	38	222	10	100
HLS3S-X0	305	19.1	2.5	—	6	81	222	10	100
HLS5S-X0	457	19.1	2.5	—	6	127	222	10	100

**UL Listed Strip Ties\*\***

HLSP1.5S-X12	152	19.1	2.5	—	6	38	222	10	100
HLSP3S-X12	305	19.1	2.5	—	6	81	222	10	100
HLSP5S-X12	457	19.1	2.5	—	6	127	222	10	100

**Rolls — Can be cut to desired length, eliminating waste**

HLM-15R0	4,572	8.4	2.5	—	6	Various	80	1	10
HLS-15R0	4,572	19.1	2.5	—	6	Various	222	1	10
HLS-75R0	22,860	19.1	2.5	—	6	Various	222	1	10

\*Minimum 51mm overlap required to achieve loop tensile rating.

\*\*Available in Black (-X0) which has an 80N min. loop tensile strength.



HLTP/HLSP Only

**Colour Chart**

Colour	Part No. Suffix	Example
Black	0	HLT2I-X0
Red	2	HLT2I-X2
Orange	3	HLT2I-X3
Yellow	4	HLT2I-X4
Green	5	HLT2I-X5
Blue	6	HLT2I-X6
Grey	8	HLT2I-X8
White	10	HLT2I-X10
Maroon	12	HLTP2I-X12

**TAK-TAPE™ Hook & Loop Strips**

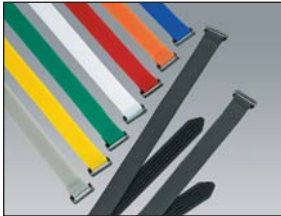


- Hook & Loop fastener for general purpose bundling
- Thin and flexible to quickly wrap around bundle
- Adjustable, releasable and reusable
- Large continuous roll you can cut to size - PANDUIT cutter included with TTS-35RX0 only
- Complementary mounts available, see page 99
- Handy, reusable plastic case with TTS-20R0, keeps material clean

Note: Minimum 51mm overlap required to achieve loop tensile rating

Part Number	Length	Width	Max. Bundle Dia.	Min. Loop Tensile Str.	Std. Pkg. Qty.	Std. Ctn. Qty.
	M	mm	mm	N		
TTS-20R0	6	19.1	Various	178	1	10
TTS-35RX0	11	19.1	Various	178	1	10

## ULTRA-CINCH™ Hook & Loop Ties



- Exclusive material with hooks and loops on same side allows user to secure a greater range of bundle diameters, including smaller bundles
- Low profile contoured cinch ring reduces overall bundle size
- Soft hook and loop material maintains network data integrity by protecting against over-tensioning, unravelling and delamination
- New colours available to match your application needs
- Releasable and reusable hundreds of times which is ideal for applications requiring frequent moves, adds or changes
- Tapered tip threads easily for snag-free threading to speed installation time
- Brass grommet (on UGCTC and UGCTE styles) assures reliable installations with a high strength metal grommet that resists pullout
- *PANDUIT* recommends flat-head screws for use in grommet applications (see table below)

Note: Minimum 51mm overlap required to achieve loop tensile rating

ULTRA-CINCH™ Tie Colour Chart		
Colour	Part No. Suffix	Example
Black	0	UCT3S-X0
Red	2	UCT3S-X2
Orange	3	UCT3S-X3
Yellow	4	UCT3S-X4
Green	5	UCT3S-X5
Blue	6	UCT3S-X6
Grey	8	UCT3S-X8
White	10	UCT3S-X10

Part Number	Length mm	Width mm	Max. Bundle Dia. mm	Min. Loop Tensile Str. N	Std. Pkg. Qty.	Std. Ctn. Qty.
<b>Cinch Ties</b>						
UCT3S-X0	305	21.6	76	222	10	100
UCT5S-X0	457	21.6	127	222	10	100
<b>Cinch Ties – Centre Mount Grommet (Bundle is centered over mounting point)</b>						
UGCTC3S-X0‡	305	21.6	76	222	10	100
UGCTC5S-X0‡	457	21.6	127	222	10	100
<b>Cinch Ties – End Mount Grommet (Bundle is offset from mounting point)</b>						
UGCTE3S-X0‡	305	21.6	76	222	10	100
UGCTE5S-X0‡	475	21.6	127	222	10	100

‡ 6mm diameter mounting hole.

### Cinch Tie Screws

Part Number	Part Description	Std. Pkg. Qty.	Std. Ctn. Qty.
UCTGS1224-X	12-24 UNC x 5/8mm Flat Head Phillips Screw	10	100
UCTGSM5-X	M5 x 16mm Flat Head Phillips Screw	10	100
UCTGSM6-X	M6 x 16mm Flat Head Phillips Screw	10	100

**Hook & Loop Cable Ties**

**Part Number System (Example of HLT2I-X0)**

**HLT**                      **2**                      **I**                      **—**                      **X**                      **0**

<u>Part Description</u>	<u>Size</u>	<u>Cross Section</u>	<u>Package Size</u>	<u>Colour</u>
HLC = H & L Cinch Tie	Approx.	I = Intermediate	X = 10	See chart below for colours and materials available
HLT = H & L Tie	Maximum	S = Standard	15R = 4.57m Roll	
HLTP = H & L Tie Plenum	Bundle		20R = 6.1m Roll	
HLS = H & L Strip	Dia. (In)		35RX = 10.7m Roll (10)	
HLSP = H & L Strip Plenum			75R = 22.9m Roll	
HLM = H & L Roll Miniature				
TTS = <i>TAK-TAPE™</i> Standard				
UCT = Ultra Cinch Tie				
UGCTC = Ultra Grommet Cinch Tie - Centre Mount				
UGCTE = Ultra Grommet Cinch Tie - End Mount				

<b>Material / Colour Chart</b>			
<b>Colour</b>	<b>Suffix</b>	<b>Colour</b>	<b>Suffix</b>
Black .....	.0	Blue .....	.6
Red .....	.2	Grey .....	.8
Orange .....	.3	White .....	.10
Yellow .....	.4	Maroon .....	.12
Green .....	.5		

**Part Number Availability List**

<b>Standard Packaging</b>	
<b>Part Number</b>	<b>Colour / Material Suffix</b>
HLM-15R	0,2,3,4,5,6,8,10
HLS-15R	0,2,3,4,5,6,8,10
HLS-75R	0,2,3,4,5,6,8,10
HLS1.5S-X	0,2,3,4,5,6,8,10
HLS3S-X	0,2,3,4,5,6,8,10
HLS5S-X	0,2,3,4,5,6,8,10
HLT2I-X	0,2,3,4,5,6,8,10
HLT3I-X	0,2,3,4,5,6,8,10
HLSP1.5S-X	0,12
HLSP3S-X	0,12
HLSP5S-X	0,12
HLTP2I-X	0,12
HLTP3I-X	0,12
TTS-20R	0
TTS-35R	0
UCT3S-X	0,2,3,4,5,6,8,10
UCT5S-X	0,2,3,4,5,6,8,10
UGCTC3S-X	0,2,3,4,5,6,8,10
UGCTC5S-X	0,2,3,4,5,6,8,10
UGCTE3S-X	0,2,3,4,5,6,8,10
UGCTE5S-X	0,2,3,4,5,6,8,10
UIHL12-X	0
UIHL22-X	0

HLSP and HLTP are unique Hook & Loop style ties that are UL Listed for use in air handling spaces and are UL94V-2 flame rated. Available in Black (-X0) and Maroon (-X12).

