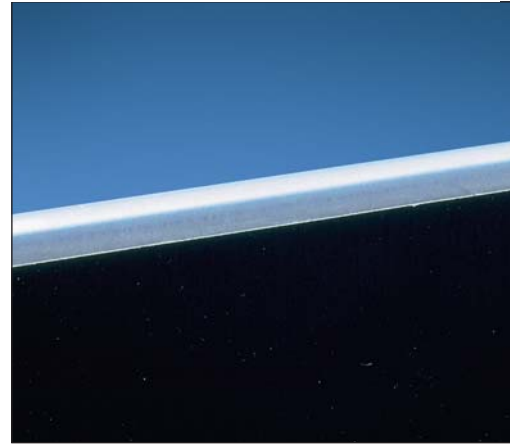


**Features**



- Nylon grommet edging strips conform to the Military Standard MS21266
- Slotted or solid wall construction
- Available with pressure sensitive adhesive
- No liner to remove from adhesive

**Suggested Applications**

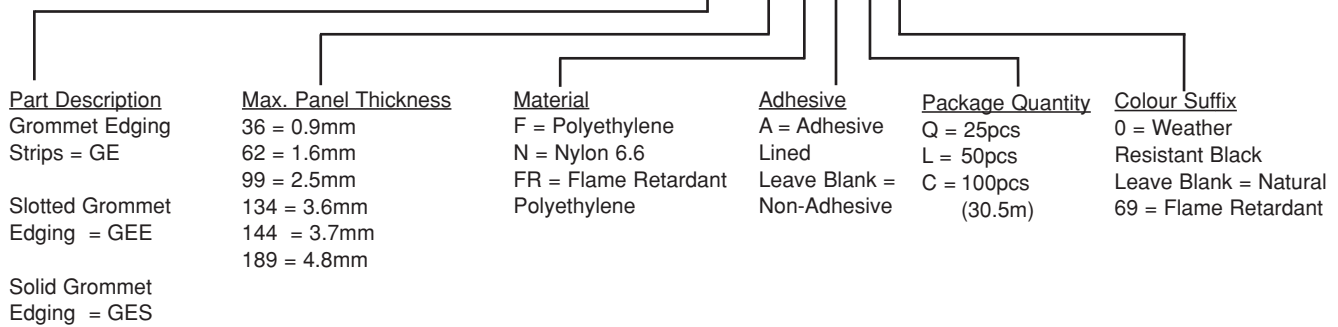


- Use the solid wall product on straight edges
- Use to prevent abrasion against the sharp edges of panel walls and knockouts

**The Functional Part Number System Makes Ordering Easy**

**Grommet Edging Part Number Description**

**Example: GEE 36 F-A-C 0**



Mulder-Hardenberg B.V., The Netherlands  
Tel.: +31 (0)23 - 531 91 84  
info1@m-h.biz

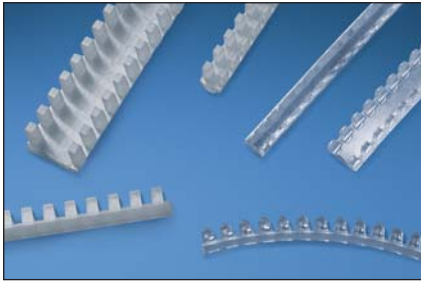
Mulder-Hardenberg N.V., Belgium  
Tel.: +32 (0)3 - 660 13 20  
infoe@m-h.biz

Mulder-Hardenberg GmbH, Germany  
Tel.: +49 (0)6192 - 97 91 85  
infoe@m-h.biz

[www.mulder-hardenberg.com](http://www.mulder-hardenberg.com)

Protects wires and cables from sharp edges

## Choose from five materials:



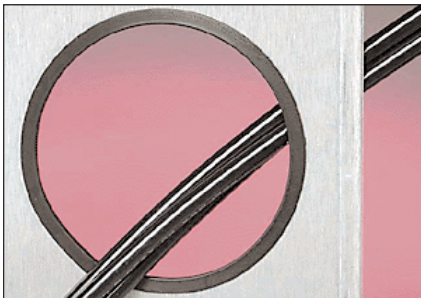
### Nylon 6.6

- Self extinguishing
- For indoor use up to 65°C
- Available with slotted wall only



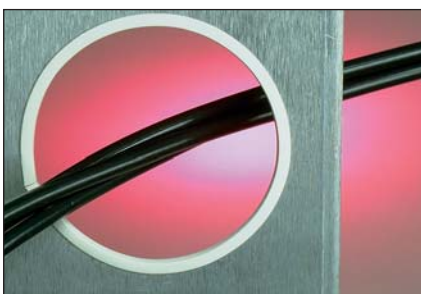
### Polyethylene

- General purpose material for indoor use up to 50°C
- Style GEE and GES provided in 0.8mm thick material, makes them highly flexible
- Available with slotted or solid wall construction



### Weather Resistant Polyethylene

- For outdoor use up to 50°C
- Excellent resistance to ultra-violet light



### Flame Retardant Polyethylene

- For indoor use up to 60°C
- Will not support a flame
- Available with slotted or solid wall construction



### Adhesive Lined Polyethylene

- Base is lined with a pressure sensitive adhesive
- Available in natural and weather resistant
- Adhesive ensures that the product will stay where it is installed

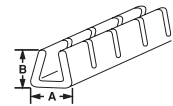
Adhesive Lined

# PANDUIT™ Grommet Edging

Part Number	Material	Colour	Panel Thickness mm	Dimensions mm		Per Roll m	Std. Pkg. Qty.*	
				A	B			
GEE36F-C	Continuous Polyethylene (Slotted Wall)	Natural	0.7 - 0.9	2.7	3.0	30.5	1 Reel	
GEE36F-C0		Black	0.7 - 0.9	2.7	3.0	30.5	1 Reel	
GEE62F-C		Natural	0.9 - 1.6	3.3	4.1	30.5	1 Reel	
GEE62F-C0		Black	0.9 - 1.6	3.3	4.1	30.5	1 Reel	
GEE99F-C		Natural	1.6 - 2.5	4.3	4.7	30.5	1 Reel	
GEE99F-C0		Black	1.6 - 2.5	4.3	4.7	30.5	1 Reel	
GEE144F-C		Natural	2.5 - 3.7	5.4	5.6	30.5	1 Reel	
GEE144F-C0		Black	2.5 - 3.7	5.6	5.6	30.5	1 Reel	
GES36F-C		Continuous Polyethylene (Solid Wall)	Natural	0.7 - 0.9	2.7	3.0	30.5	1 Reel
GES36F-C0			Black	0.7 - 0.9	2.7	3.0	30.5	1 Reel
GES62F-C	Natural		0.9 - 1.6	3.3	4.1	30.5	1 Reel	
GES62F-C0	Black		0.9 - 1.6	3.3	4.1	30.5	1 Reel	
GES99F-C	Natural		1.6 - 2.5	4.3	4.7	30.5	1 Reel	
GES99F-C0	Black		1.6 - 2.5	4.3	4.7	30.5	1 Reel	
GES144F-C	Natural		2.5 - 3.7	5.4	5.6	30.5	1 Reel	
GES144F-C0	Black		2.5 - 3.7	5.4	5.6	30.5	1 Reel	
GES189F-C	Natural		3.7 - 4.8	7.6	7.7	30.5	1 Reel	
GES189F-C0	Black		3.7 - 4.8	7.6	7.7	30.5	1 Reel	
GEE62F-A-C	Continuous Polyethylene With ADHESIVE (Slotted Wall)	Natural	0.9 - 1.6	3.3	4.1	30.5	1 Reel	
GEE62F-A-C0		Black	0.9 - 1.6	3.3	4.1	30.5	1 Reel	
GEE99F-A-C		Natural	1.6 - 2.5	4.3	4.7	30.5	1 Reel	
GEE99F-A-C0		Black	1.6 - 2.5	4.3	4.7	30.5	1 Reel	
GEE144F-A-C	Continuous Polyethylene With ADHESIVE (Solid Wall)	Natural	2.5 - 3.7	5.4	5.6	30.5	1 Reel	
GEE144F-A-C0		Black	2.5 - 3.7	5.4	5.6	30.5	1 Reel	
GES62F-A-C		Natural	0.9 - 1.6	3.3	4.1	30.5	1 Reel	
GES62F-A-C0		Black	0.9 - 1.6	3.3	4.1	30.5	1 Reel	
GES99F-A-C	Continuous Polyethylene With ADHESIVE (Solid Wall)	Natural	1.6 - 2.5	4.3	4.7	30.5	1 Reel	
GES99F-A-C0		Black	1.6 - 2.5	4.3	4.7	30.5	1 Reel	
GES144F-A-C		Natural	2.5 - 3.7	5.4	5.6	30.5	1 Reel	
GES144F-A-C0		Black	2.5 - 3.7	5.4	5.6	30.5	1 Reel	
GEE36FR-C	Flame Retardant Polyethylene (Slotted Wall)	Natural	0.7 - 0.9	2.7	3.0	30.5	1 Reel	
GEE62FR-C		Natural	0.9 - 1.6	3.3	4.1	30.5	1 Reel	
GEE99FR-C		Natural	1.6 - 2.5	4.3	3.9	30.5	1 Reel	
GEE144FR-C		Natural	2.5 - 3.7	5.4	5.9	30.5	1 Reel	
GES36FR-C	Flame Retardant Polyethylene (Solid Wall)	Natural	0.7 - 0.9	2.7	3.0	30.5	1 Reel	
GES62FR-C		Natural	0.9 - 1.6	3.3	4.1	30.5	1 Reel	
GES99FR-C		Natural	1.6 - 2.5	4.3	3.9	30.5	1 Reel	
GES144FR-C		Natural	2.5 - 3.7	5.4	5.9	30.5	1 Reel	
GEE47N-C	Continuous Nylon 6.6 (Slotted Wall)	Natural	1.0 - 1.4	3.3	3.5	30.5	1 Reel	
GEE55N-C		Natural	1.2 - 1.6	3.4	3.5	30.5	1 Reel	
GEE71N-C		Natural	1.6 - 2.0	3.8	3.5	30.5	1 Reel	
GEE98N-C		Natural	2.3 - 2.7	4.6	4.5	30.5	1 Reel	
GEE134N-C	Natural	3.2 - 3.6	5.3	3.5	30.5	1 Reel		

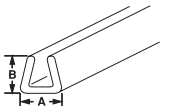
\*Order the number of pieces required in multiples of standard package quantities.

## Polyethylene



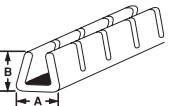
Style **GEE**  
Slotted Wall  
Continuous  
(30.5m) Reels

## Polyethylene



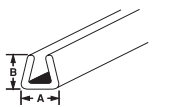
Style **GES**  
Solid Wall  
Continuous  
(30.5m) Reels

## Adhesive Lined Polyethylene



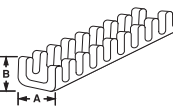
Style **GEE-A**  
Slotted Wall  
Continuous  
(30.5m) Reels

## Adhesive Lined Polyethylene



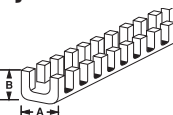
Style **GES-A**  
Solid Wall  
Continuous  
(30.5m) Reels

## Nylon 6.6



Continuous  
(30.5m) Reels  
Style **GEE**  
Slotted Wall

## Nylon 6.6



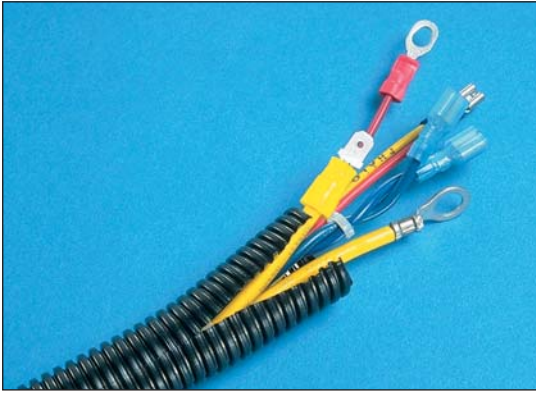
Style **GE**  
Slotted Wall  
12 323.85mm strips

Part Number	Material	Colour	Panel Thickness mm	Dimensions — mm		Pieces Per Pkg.	Std. Pkg. Qty.*
				A	B		
GE52-C	Military Standard MS21266 323.85mm Nylon 6.6 Strips (-69 designates Flame Retardant)	Natural	0.4 - 1.3	3.8	3.9	100	Strips
GE52-C69**		Natural	0.4 - 1.3	3.8	3.9	100	Strips
GE85-C		Natural	1.3 - 2.2	4.5	3.9	100	Strips
GE85-C69**		Natural	1.3 - 2.2	4.5	3.9	100	Strips
GE128-C		Natural	2.2 - 3.3	5.6	3.9	100	Strips
GE128-C69**		Natural	2.2 - 3.3	5.6	3.9	100	Strips
GE192-L		Natural	3.3 - 4.9	8.3	5.8	50	Strips
GE192-L69**		Natural	3.3 - 4.9	8.3	5.8	50	Strips
GE255-L		Natural	4.9 - 6.5	9.8	6.1	50	Strips
GE318-L		Natural	6.5 - 8.1	11.3	6.5	50	Strips
GE380-Q		Natural	8.1 - 9.7	13.1	6.5	25	Strips
GE510-Q		Natural	9.7 - 13.0	16.3	6.5	25	Strips

\*Order the number of pieces required in multiples of standard package quantities.

\*\*This material is not listed under Military Standard MS21266.

# PANDUIT™ Corrugated Loom Tubing

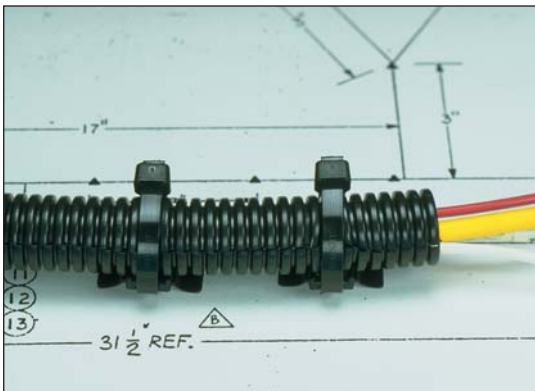


- PANDUIT Corrugated Loom Tubing is offered for applications where spiral wrap or braided expandable sleeving may be difficult to install or where they do not offer the amount of protection required
- Available in Heat Stabilised Nylon or Polyethylene, this product available with a lengthwise slit which makes it easy to install onto a bundle of wires or a pre-assembled harness assembly



## Features and Benefits

- Protects and reduces the risk of damage to wiring
- Crush, impact and abrasion resistant
- Available in slit or solid wall
- Available in easy to handle 30.5 metre lengths
- Available in black, orange and yellow polyethylene and black heat stabilised nylon
- Secure with push type cable ties, adhesive or push type mounts



## Suggested Applications

- Bundle wires in control panels
- Contain and organise loose and bundled wiring harnesses
- Route wires in automotive, truck, trailer, bus, conversion van, emergency service and recreational vehicle applications
- Protect wires in off road/mobile equipment
- Use in mining equipment
- Marine applications for protecting wires on boats and ships



## Wiring Accessories for Corrugated Loom Tubing

- Tie Harness Mounts have a specially designed location tab on the mount that aligns with grooves in corrugated loom tubing to ensure proper mount location during assembly



Mulder-Hardenberg B.V., The Netherlands  
Tel.: +31 (0)23 - 531 91 84  
info\_nl@m-h.biz

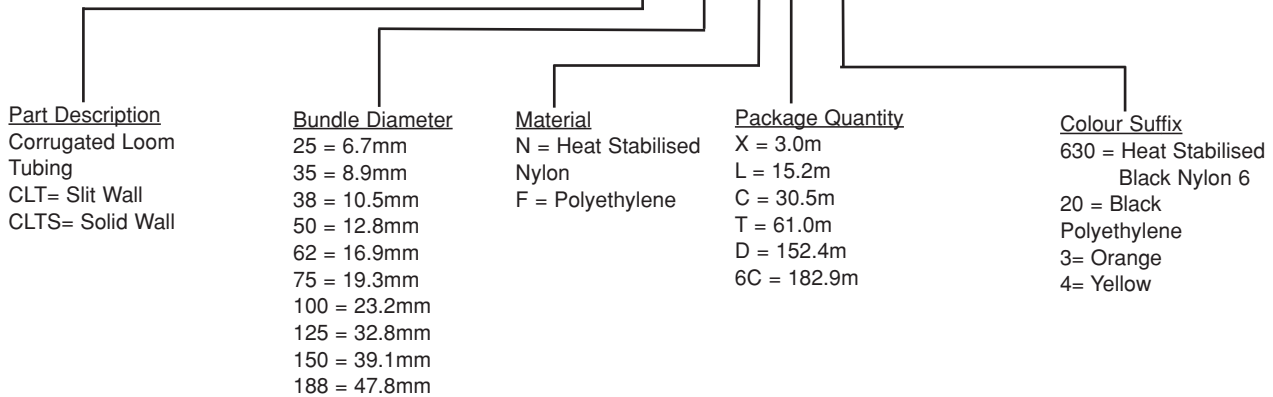
Mulder-Hardenberg N.V., Belgium  
Tel.: +32 (0)3 - 660 13 20  
info\_be@m-h.biz

Mulder-Hardenberg GmbH, Germany  
Tel.: +49 (0)6192 - 97 91 85  
info\_de@m-h.biz

[www.mulder-hardenberg.com](http://www.mulder-hardenberg.com)

The Functional Part Number System Makes Ordering Easy  
Corrugated Loom Tubing Part Number Description

**Example: CLT 100 N-C 630**



Part Number		Material	Colour	Inside Diameter mm	Outside Diameter mm	Length m	Std. Pkg. Qty.*
Slit	Solid						
CLT25F-C20	CLTS25F-C20	Polyethylene	Black	6.7	9.9	30.5	1
CLT35F-C20	CLTS35F-C20			8.9	12.7	30.5	1
CLT38F-C20	CLTS38F-C20			10.5	14.2	30.5	1
CLT50F-C20	CLTS50F-C20			12.8	17.0	30.5	1
CLT62F-C20	CLTS62F-C20			16.9	21.1	30.5	1
CLT75F-C20	CLTS75F-C20			19.3	23.8	30.5	1
CLT100F-C20	CLTS100F-C20			23.2	27.7	30.5	1
CLT125F-L20	CLTS125F-L20			32.8	38.1	15.2	1
CLT150F-X20	**			39.1	47.2	3.0	1
CLT150F-T20	**			39.1	47.2	61.0	1
CLT150F-D20	CLTS150F-D20			39.1	47.2	152.4	1
CLT188F-X20	**			47.8	55.1	3.0	1
CLT188F-C20	**			47.8	55.1	30.5	1
CLT188F-6C20	**			47.8	55.1	182.9	1
CLT25F-C3	CLTS25F-C3			Polyethylene	Orange	6.7	9.9
CLT35F-C3	CLTS35F-C3	8.9	12.7			30.5	1
CLT38F-C3	CLTS38F-C3	10.5	14.2			30.5	1
CLT50F-C3	CLTS50F-C3	12.8	17.0			30.5	1
CLT62F-C3	CLTS62F-C3	16.9	21.1			30.5	1
CLT75F-C3	CLTS75F-C3	19.3	23.8			30.5	1
CLT100F-C3	CLTS100F-C3	23.2	27.7			30.5	1
CLT125F-L3	CLTS125F-L3	32.8	38.1			15.2	1
CLT150F-X3	**	39.1	47.2			3.0	1
CLT150F-D3	CLTS150F-D3	39.1	47.2			152.4	1
CLT188F-X3	**	47.8	55.1			3.0	1
CLT188F-C3	**	47.8	55.1			30.5	1
CLT150F-X4	**	39.1	47.2			3.0	1
CLT150F-D4	**	39.1	47.2			152.4	1
CLT188F-X4	**	47.8	55.1			3.0	1
CLT188F-C4	**	47.8	55.1	30.5	1		
CLT25N-C630	CLTS25N-C	Heat Stabilised Black Nylon 6	Black	6.7	9.9	30.5	1
CLT35N-C630	CLTS35N-C			8.9	12.7	30.5	1
CLT38N-C630	CLTS38N-C			10.5	14.2	30.5	1
CLT50N-C630	CLTS50N-C			12.8	17.0	30.5	1
CLT62N-C630	CLTS62N-C			16.9	21.1	30.5	1
CLT75N-C630	CLTS75N-C			19.3	23.8	30.5	1
CLT100N-C630	CLTS100N-C			23.2	27.7	30.5	1
CLT125N-L630	**			32.8	38.1	15.2	1
CLT150N-D630	**			39.1	47.2	152.4	1
CLT188N-6C630	**			47.8	55.1	182.9	1

\*Order the number of pieces required in multiples of standard package quantities.



Mulder-Hardenberg B.V., The Netherlands  
Tel.: +31 (0)23 - 531 91 84  
infonl@m-h.biz

Mulder-Hardenberg N.V., Belgium  
Tel.: +32 (0)3 - 660 13 20  
info@be-m-h.biz

Mulder-Hardenberg GmbH, Germany  
Tel.: +49 (0)6192 - 97 91 85  
info@de-m-h.biz

www.mulder-hardenberg.com

**WITH**  
PANDUIT Fittings



**WITHOUT**  
PANDUIT Fittings

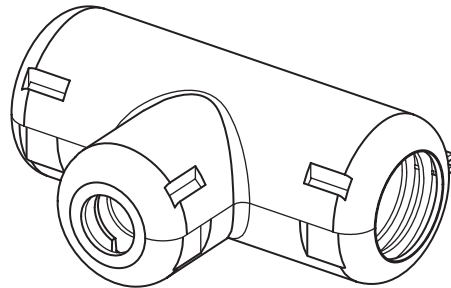
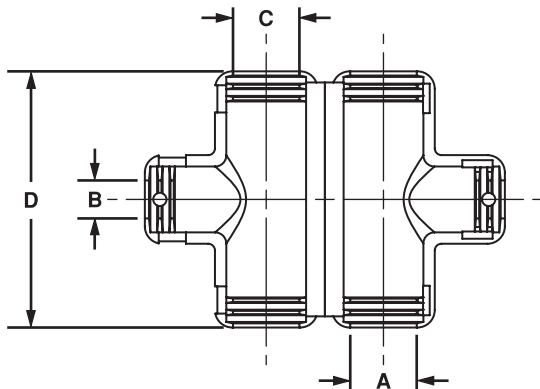


**Features:**

- Fast assembly
- Virtually eliminates taping
- Easy to assemble
- Locking latch design
- Durable polypropylene shell
- Works with most popular sizes

**Benefits**

- Reduces production time
- Improves system appearance
- Reduces operator fatigue
- Secures fittings firmly in place
- Protects wires
- Provides easy selection of Corrugated Loom Tubing fittings for application needs



Part Number	Dimensions mm				Material	Colour	Packaging*	
	A	B	C	D			Std. Pkg. Qty.*	Std. Ctn. Qty.
CF382538F-Q	12.45	8.6	12.45	52.3	Polypropylene	Black	25	100
CF502550F-Q	15.99		15.00	58.4				
CF503850F-Q		12.45						
CF752575F-Q	21.60	8.6	21.60	77.7				
CF753875F-Q		12.45						

\*Order the number of pieces required in multiples of standard package quantities.



Mulder-Hardenberg B.V., The Netherlands  
Tel.: +31 (0)23 - 531 91 84  
infol@mh.biz

Mulder-Hardenberg N.V., Belgium  
Tel.: +32 (0)3 - 660 13 20  
info@mh.biz

Mulder-Hardenberg GmbH, Germany  
Tel.: +49 (0)6192 - 97 91 85  
info@mh.biz

www.mulder-hardenberg.com

# PANDUIT™ Braided Expandable Sleeving

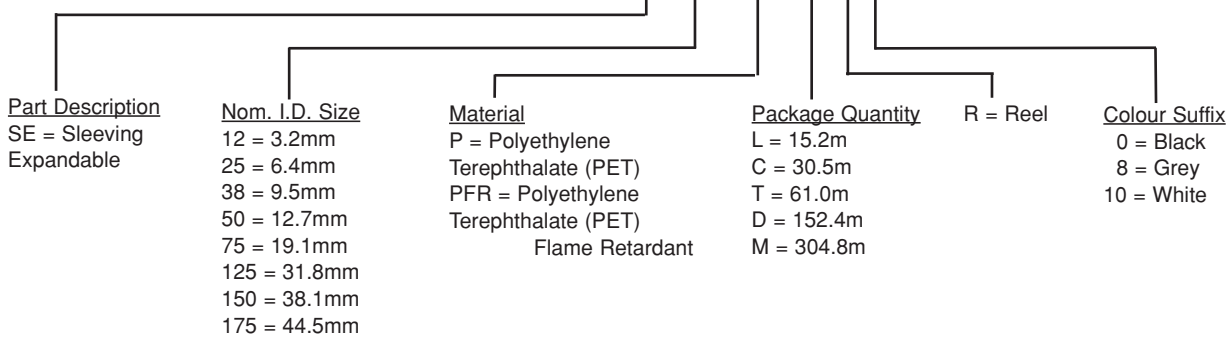


- Material: Polyethylene Terephthalate — PET
- Provides continuous abrasion resistance for wires, cables and tubing
- Lightweight, durable protection
- Highly flexible open weave will not trap heat or humidity
- Rated for use up to 125°C
- Allows for use with irregular shapes
- Stock colours: Black, grey and white



## The Functional Part Number System Makes Ordering Easy Braided Expandable Sleeving Part Number Description

Example: **SE 25 PFR-M R 0**



Part Number Black	Part Number Grey	Part Number White	Nominal I.D. mm	Nominal Diameter Range mm	Std. Pkg. Qty.* m	Std. Ctn. Qty.
SE12P-TR0	SE12P-TR8	—	3.2	2.4 to 6.4	61.0	4
SE12P-MR0	SE12P-MR8	SE12P-MR10			304.8	2
SE25P-TR0	SE25P-TR8	—	6.4	3.2 to 9.5	61.0	4
SE25P-MR0	SE25P-MR8	SE25P-MR10			304.8	2
SE38P-TR0	SE38P-TR8	—	9.5	4.7 to 14.3	61.0	4
SE38P-MR0	SE38P-MR8	SE38P-MR10			304.8	2
SE50P-CR0	SE50P-CR8	—	12.7	6.4 to 19.1	30.5	4
SE50P-DR0	SE50P-DR8	SE50P-DR10			152.4	2
SE75P-CR0	SE75P-CR8	—	19.1	12.7 to 31.8	30.5	4
SE75P-DR0	SE75P-DR8	SE75P-DR10			152.4	2
SE125P-LR0	SE125P-LR8	—	31.8	19.1 to 38.1	15.2	4
SE125P-TR0	SE125P-TR8	SE125P-TR10			61.0	2
SE150P-LR0	SE150P-LR8	—	38.1	25.4 to 57.2	15.2	4
SE150P-TR0	SE150P-TR8	SE150P-TR10			61.0	2
SE175P-TR0	—	—	44.5	31.8 to 69.8	61.0	2

\*Order number of reels required.

# PANDUIT™ Flame Retardant Braided Expandable Sleeving



- Provides continuous abrasion resistance for wires, cables and tubing
- Lightweight, durable protection
- Highly flexible open weave will not trap heat or humidity
- Rated for use up to 125°C
- Allows for use with irregular shapes
- Self extinguishing, meets UL VW-1
- Stock colours: Black or grey with white tracer, or in white with black tracer to identify flame retardant material



Part Number Black	Part Number Grey	Part Number White	Nominal I.D. mm	Nominal Diameter Range mm	Std. Pkg. Qty.* m	Std. Ctn. Qty.
SE12PFR-TR0	SE12PFR-TR8	—	3.2	2.4 to 6.4	60.1	4
SE12PFR-MR0	SE12PFR-MR8	SE12PFR-MR10			304.8	2
SE25PFR-TR0	SE25PFR-TR8	—	6.4	3.2 to 9.5	60.1	4
SE25PFR-MR0	SE25PFR-MR8	SE25PFR-MR10			304.8	2
SE38PFR-TR0	SE38PFR-TR8	—	9.5	4.7 to 14.3	60.1	4
SE38PFR-MR0	SE38PFR-MR8	SE38PFR-MR10			304.8	2
SE50PFR-CR0	SE50PFR-CR8	—	12.7	6.4 to 19.1	30.5	4
SE50PFR-DR0	SE50PFR-DR8	SE50PFR-DR10			152.4	2
SE75PFR-CR0	SE75PFR-CR8	—	19.1	12.7 to 31.8	30.5	4
SE75PFR-DR0	SE75PFR-DR8	SE75PFR-DR10			152.4	2
SE125PFR-LR0	SE125PFR-LR8	—	31.8	19.1 to 38.1	15.2	4
SE125PFR-TR0	SE125PFR-TR8	SE125PFR-TR10			61.0	2
SE150PFR-LR0	SE150PFR-LR8	—	38.1	25.4 to 57.2	15.2	4
SE150PFR-TR0	SE150PFR-TR8	SE150PFR-TR10			61.0	2
SE175PFR-TR0	—	—	44.5	31.8 to 69.8	61.0	2

\*Order number of reels required.



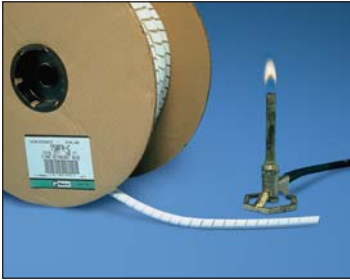
Mulder-Hardenberg B.V., The Netherlands  
Tel.: +31 (0)23 - 531 91 84  
infoln@m-h.biz

Mulder-Hardenberg N.V., Belgium  
Tel.: +32 (0)3 - 660 13 20  
infobe@m-h.biz

Mulder-Hardenberg GmbH, Germany  
Tel.: +49 (0)6192 - 97 91 85  
infode@m-h.biz

[www.mulder-hardenberg.com](http://www.mulder-hardenberg.com)

**Abrasion Protection Products Flammability Tests and Classifications**



- A number of test procedures have been developed which can be used for the evaluation and comparison of various materials to support combustion
- Review the following classifications to find which category is designed to suit your abrasion and protection applications

**UL94 Vertical Burning Test**

Test samples of material, with dimension 125 ± 5mm by 13.0 ± 5mm and provided in the minimum and maximum thickness of the intended end use product, are tested in an unconditioned (as manufactured) state and in a conditioned state (7 days at 75°C). The test requires the placement of a precisely controlled flame under a vertically supported specimen for a 10 second period. The flame is removed and the duration of flaming is recorded. If the flame extinguishes, the specimen is immediately subjected to a second 10 second ignition period. Duration of flaming is again recorded. A piece of 100% cotton is placed under the specimen. Also observed and documented is if the sample drips flaming particles that ignite the cotton indicator below.

**Materials Classification**

Criteria Conditions	V-0	V-1	V-2
Afterflame time for each individual specimen $t_1$ or $t_2$	≤10s	≤30s	≤30s
Total afterflame time for any condition set ( $t_1$ plus $t_2$ for the 5 specimens)	≤50s	≤250s	≤250s
Afterflame plus afterglow time for each individual specimen after the second flame application ( $t_2 + t_3$ )	≤30s	≤60s	≤60s
Afterflame or afterglow of any specimen up to the holding clamp	No	No	No
Cotton indicator ignited by flaming particles or drops	No	No	Yes

$t_1$	Afterflame time after first flame application
$t_2$	Afterflame time after flame application
$t_3$	Afterglow time after second flame application

**MATERIALS CLASSIFIED UL-94 HB**

- Specimens shall have a maximum burn rate of <38.1mm./min over 76.2mm of thickness of 3.0mm to 12.7mm
- Specimens shall have a maximum burn rate of <76.2mm/min over 76.2mm for a thickness less than 3.0mm

**UL224 VERTICAL WIRE FLAME TEST**

Samples of fully recovered tubing are placed over a length of fine spring steel music wire. The test requires the precise placement of a controlled flame that contacts the heat shrink tubing. The flame is applied in five fifteen second intervals with a time period between applications. If the flame extinguishes immediately after the first flame removal, subsequent flame applications are made to the tubing. Duration of specimen flaming is noted. A piece of surgical cotton is placed under the specimen. If a flaming or glowing piece of tubing drips and ignites the cotton, this is also noted.



Mulder-Hardenberg B.V., The Netherlands  
 Tel.: +31 (0)23 - 531 91 84  
 info@mh-h.biz

Mulder-Hardenberg N.V., Belgium  
 Tel.: +32 (0)3 - 660 13 20  
 info@mh-h.biz

Mulder-Hardenberg GmbH, Germany  
 Tel.: +49 (0)6192 - 97 91 85  
 info@mh-h.biz

www.mulder-hardenberg.com

**Abrasion Protection Materials Technical Data**

	Ratings and Approvals			Physical Properties				Chemical Resistance				
	UL Temperature Index	Flammability (UL94)	Melting Temperature	Abrasion Resistance (Lower number is better)	Specific Gravity (D792)	Minimum Tensile @23°C (psi)	Water Absorption (Max. 24 hrs.)	Organic Solvents	Alkalies	Acids	Petro-Chemicals	
<b>SPIRAL WRAP</b>	<b>Natural Polyethylene</b> Lowest cost material for indoor use up to 50°C. Natural is available in all sizes.	-40°C to 50°C	HB	115°C	22 mg	.91 - .93	1400 (D368)	.01%	Resistant below 60°C except to chlorinated solvents	Resistant	Resistant except to oxidising acids	Some Discolouration
	<b>Weather Resistant Polyethylene</b> This material has the same properties as natural polyethylene, and also has additives which allow it to resist the effects of ultraviolet light and acid rain in an outdoor environment. This product is available in black only.	-40°C to 50°C	HB	115°C	20 mg	.93 - 1.09	2000 (D368)	.03%	Resistant below 60°C except to chlorinated solvents	Resistant	Resistant except to oxidising acids	No Discolouration
	<b>Fire Resistant Polyethylene</b> UL94-V2 Rating This material is self extinguishing and passes the UL 94 flame retardant test with V2 rating.	-40°C to 50°C	V-2	115°C	27 mg	1.00 - 1.30	1400 (D368)	.02%	Resistant below 60°C except to chlorinated solvents	Resistant	Resistant except to oxidising acids	Some Discolouration
	<b>Flame Retardant Polyethylene</b> UL94-V0 Rating. This material is self extinguishing and passes the UL94 flame retardant test with a V0 rating.	-40°C to 90°C	V-0	132°C	22 mg	1.15	1500 (D368)	.02%	Resistant except to halogenated hydrocarbons	Resistant	Resistant	Resistant Some Discolouration
	<b>Nylon 6.6</b> Nylon is strong, durable, self-extinguishing material for indoor use up to 65°C. It offers a combination of lightweight, wide temperature range, and high abrasion resistance. This material is suitable for applications where heavy vibration or stress exists on the wiring or tubing.	-40°C to 65°C	V-2	263°C	7 mg	1.13 - 1.15	12,400 (D368)	1.2%	Resistant except to halogenated hydrocarbons	Resistant	Not recommended	Resistant No Discolouration
	<b>Weather Resistant Nylon</b> This material has the same properties as natural Nylon and also has additives which allow it to resist the effects of ultraviolet light in an outdoor environment. This product is available in black only.	-40°C to 65°C	V-2	263°C	7 mg	1.13 - 1.15	12,000 (D368)	1.2%	Resistant except to halogenated hydrocarbons	Resistant	Not recommended	Resistant No Discolouration
	<b>TEFLON‡</b> This material is a non-flammable, fluorocarbon resin material. Suitable for use in any application (including nuclear containment). It is rated up to 180°C. Colour: Opaque to Translucent	-240°C to 260°C	V-0	342°C	7 mg	2.13 - 2.22	3000 (D876)	.01%	Resistant	Resistant	Resistant	Resistant No Discolouration
<b>PAN-WRAP</b>	<b>Natural Polyethylene</b> Lowest cost material for indoor use up to 50°C. Natural is available in all sizes.	-40°C to 50°C	HB	115°C	22 mg	.91 - .93	1400 (D638)	.01%	Resistant below 60°C except to chlorinated solvents	Resistant	Resistant except to oxidising acids	Some Discolouration
	<b>Flame Retardant Polyethylene</b> UL94-V0 Rating. This material is self extinguishing and passes the UL94 flame retardant test with a V0 rating.	-40°C to 90°C	V-0	132°C	22 mg	1.15	1500 (D638)	.02%	Resistant except to halogenated hydrocarbons	Resistant	Resistant	Resistant Some Discolouration
<b>SLEEVING</b>	<b>Polyethylene Terephthalate (PET)</b> This material is a thermoplastic polyester material designed for indoor applications. It is rated for use up to 125°C and will tolerate short-term exposure up to 230°C. Colours: Black, White and Grey	-70°C to 125°C	HB	260°C	—	1.31	100,000 (D876)	.08%	Resistant to some solvents	Resistant to most weak bases	Resistant	Resistant No Discolouration
	<b>Flame Ret. Polyethylene Terephthalate (PET)</b> This material is a self-extinguishing thermoplastic polyester that can be used indoors. It is also rated for use up to 125°C and will tolerate short term exposure up to 230°C. It is provided with tracers to identify the flame retardant material.	-70°C to 125°C	UL224 VW-1	320°C	—	1.39	100,000 (D876)	.08%	Resistant to some solvents	Resistant to most weak bases	Resistant	Resistant No Discolouration

NOTE: Typical operating temperature ranges are extended based on end use application and specific environment tests.  
 ‡ Teflon or equivalent fluorocarbon PTFE is used. Teflon is the registered trademark of E.I. DuPont de Nemours Co.



Mulder-Hardenberg B.V., The Netherlands  
 Tel.: +31 (0)23 - 531 91 84  
 info\_nl@m-h.biz

Mulder-Hardenberg N.V., Belgium  
 Tel.: +32 (0)3 - 660 13 20  
 info\_be@m-h.biz

Mulder-Hardenberg GmbH, Germany  
 Tel.: +49 (0)6192 - 97 91 85  
 info\_de@m-h.biz

www.mulder-hardenberg.com

**Abrasion Protection Materials Technical Data**

		Ratings and Approvals			Physical Properties			Chemical Resistance				
		UL Temperature Index	Flammability (UL94)	Melting Temperature	Abrasion Resistance (Lower number is better)	Specific Gravity (D792)	Minimum Tensile @23°C (psi)	Water Absorption (Max. 24 hrs.)	Organic Solvents	Alkalies	Acids	Petro-Chemicals
CLT	<b>Black Polyethylene</b> Lowest cost material is for use up to 50°C. Other colours may be available.	-40°C to 50°C	HB	—	—	.926 - .940	1500 (D638)	—	Resistant except to halogenated hydrocarbons	Resistant	Resistant	Resistant No Discolouration
	<b>Nylon 6</b> Nylon is a strong, impact modified, heat stabilised, durable high abrasion resistant material.	-40°C to 110°C	V-2	211°C	—	1.06 - 1.16	8000 (D638)	1.3%	Resistant except to halogenated hydrocarbons	Resistant	Not recommended	Resistant No Discolouration
PVC	<b>PVC Non-Shrink Tubing</b> This material provides insulation and protection for continuous use at temperature -20°C to 105°C	-20°C to 105°C	UL224 VW-1	—	—	1.35	2500 (D876)	—	Resistant except to aromatic hydrocarbons, ketones and esters	Resistant	Resistant	Resistant No Discolouration
CLT FITTINGS	<b>Black Polyethylene</b> Lowest cost material is for use up to 65°C.	-40°C to 65°C	UL94 HB	150°C	—	1.04	3,900 (D638)	.02 - .03%	Resistant except to halogenated hydrocarbons	Resistant	Resistant except to strong oxidising acids	Resistant Some Discolouration
GROMMET EDGING	<b>Natural Polyethylene</b> Lowest cost material for indoor use up to 50°C. Natural is available in all sizes.	-40°C to 50°C	HB	115°C	22 mg	.91 - .93	1400 (D638)	.01%	Resistant below 60°C except to chlorinated solvents	Resistant	Resistant except to oxidising acids	Some Discolouration
	<b>Weather Resistant Polyethylene</b> This material has the same properties as natural polyethylene, and also has additives which allow it to resist the effects of ultraviolet light and acid rain in an outdoor environment. This product is available in black only.	-40°C to 50°C	HB	115°C	20 mg	.93 - 1.09	2000 (D638)	.03%	Resistant below 60°C except to chlorinated solvents	Resistant	Resistant except to oxidising acids	No Discolouration
	<b>Flame Retardant Polyethylene</b> UL94-V0 Rating This material is self extinguishing and passes the UL94 flame retardant test with a V0 rating.	-40°C to 60°C	V-0	132°C	22 mg	1.38	1200	.02%	Resistant below 60°C except to chlorinated solvents	Resistant	Resistant except to oxidising acids	Some Discolouration
	<b>Nylon</b> Nylon is strong, durable, self-extinguishing material for indoor use up to 65°C It offers a combination of lightweight, wide temperature range, and high abrasion resistance. This material is suitable for applications where heavy vibration or stress exists on the wiring or tubing.	-40°C to 65°C	V-2	255°C	7 mg	1.03 - 1.15	12,400 (D638)	1.5%	Resistant except to phenols and formic acid	Resistant	Resistant to most weak acids	No Discolouration
ADH. LINED GROMMET	<b>Natural Polyethylene</b> Lowest cost material for indoor use up to 50°C. Natural is available in all sizes. (Adhesive Backed Grommet)	-40°C to 50°C	HB	115°C	22 mg	.91 - .93	1400 (D638)	.01%	Resistant below 60°C except to chlorinated solvents	Resistant	Resistant except to oxidising acids	Some Discolouration
	<b>Weather Resistant Polyethylene</b> This material has the same properties as natural polyethylene only. Also has additives which allow it to resist the effects of ultraviolet light and acid rain in an outdoor environment. This product is available in black only. (Adhesive Lined Grommet)	-40°C to 50°C	HB	115°C	20 mg	.93 - .109	2000 (D638)	.03%	Resistant below 60°C except to chlorinated solvents	Resistant	Resistant except to oxidising acids	No Discolouration

NOTE: Typical operating temperature ranges are extended based on end use application and specific environment tests.



Mulder-Hardenberg B.V., The Netherlands  
Tel.: +31 (0)23 - 531 91 84  
infoln@m-h.biz

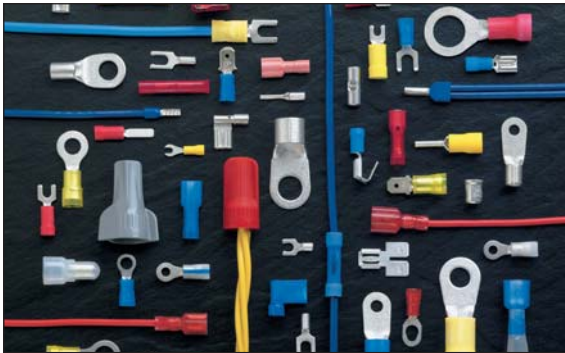
Mulder-Hardenberg N.V., Belgium  
Tel.: +32 (0)3 - 660 13 20  
info@be-m-h.biz

Mulder-Hardenberg GmbH, Germany  
Tel.: +49 (0)6192 - 97 91 85  
info@de-m-h.biz

www.mulder-hardenberg.com

## **PANDUIT™** Complementary Wiring Products

### **PAN-TERM™** Terminals, Disconnects and Splices



**Designed and manufactured for fast assembly, long, reliable performance...**

- Funnel entry available on vinyl and nylon insulated terminals and disconnects
- Made of electrolytically refined copper to provide optimum combination of crimp forming properties and low resistance, high conductivity terminations
- Offered in various types including rings, forks, locking forks and short locking forks
- Available sizes from 26 to 2 AWG and stud diameters from #2 to 12.7mm
- Disconnects are available in many styles including fully insulated. Splices and wire joints provide permanent, reliable connections
- Wide assortment of manual, controlled cycle, battery operated and pneumatic crimping tools which give you reliable connections at a lower installed cost

### **REEL SMART™** Continuously Moulded Reel-Fed Terminals, Disconnects and Splices



**"Reel" productivity assures high volume production at significant savings...**

- ONE TECHNOLOGY, one solution for continuously moulded Terminals, Butt Splices and Disconnects, including Fully Insulated Right Angle Female Disconnects and Pre-Assembled Locking Disconnects
- The *REEL SMART* Termination System for installing *PANDUIT* continuously moulded products provides the best solution for quality, reliable, high volume terminations
- This patented system offers an array of technical enhancements designed to dramatically reduce set-up time and the amount of downtime traditionally incurred with alternate systems
- Single, patented application terminates entire product line
- Applicators compatible with automatic wire processing machines and other manufacturer's presses



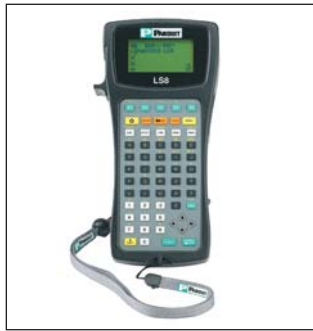
Mulder-Hardenberg B.V., The Netherlands  
Tel.: +31 (0)23 - 531 91 84  
info1@m-h.biz

Mulder-Hardenberg N.V., Belgium  
Tel.: +32 (0)3 - 660 13 20  
info@m-h.biz

Mulder-Hardenberg GmbH, Germany  
Tel.: +49 (0)6192 - 97 91 85  
info@m-h.biz

[www.mulder-hardenberg.com](http://www.mulder-hardenberg.com)

**Identification and Labelling Solutions**



**PANDUIT offers a complete line of industrial Identification Solutions...**

- **Computer Printable Labels**  
Thermal transfer, laser, ink jet and dot-matrix labels available in a wide variety of sizes and industrial materials.
- **Printers**  
Versatile hand-held printers for on-site labelling and desktop thermal transfer printers for medium to high volume applications.
- **Labelling Software**  
Labelling programs available for wire marking, component identification and safety markers and tags.
- **Preprinted Markers**  
Available in books, cards, tape, slip-on and clip-on formats for fast, convenient identification of wires, cables and other industrial applications.
- **Lockout/Tagout and Safety**  
Lockout devices, training materials, tags and safety markers for OSHA safety standard compliance.

**Network Connectivity Systems**



**The unique PAN-NET™ Network Connectivity System provides high performance solutions with FUTURE READY features for system upgradability. Lowest installed cost solutions are available for both the enterprise and service provider markets...**

- **Breadth of Product Offering**  
*PANDUIT* supplies copper and fibre optic connectivity for reliable data, video and voice transmissions, end-to-end cable management for maximum protection and system integrity as well as standards compliance pathway and outlet products for maximum performance.
- **Modular**  
All *PANDUIT MINI-COM™* copper and fibre optic modules snap in and out of all *MINI-COM* faceplates, surface mount boxes, patch panels and multimedia adapter panels.



Mulder-Hardenberg B.V., The Netherlands  
Tel.: +31 (0)23 - 531 91 84  
infoNL@m-h.biz

Mulder-Hardenberg N.V., Belgium  
Tel.: +32 (0)3 - 660 13 20  
infoBE@m-h.biz

Mulder-Hardenberg GmbH, Germany  
Tel.: +49 (0)6192 - 97 91 85  
infoDE@m-h.biz

[www.mulder-hardenberg.com](http://www.mulder-hardenberg.com)

## Power Connectors



**For applications in sizes #14 AWG thru 1000 MCM...**

- **Compression Connectors**  
Provide reliable permanently crimped connections in sizes matched for each conductor size. They are easy to install and provide a simplified means of inspection of a proper crimp.
- **Custom Lugs**  
*PANDUIT* offers a wide variety of dimensional choices for #8 AWG to 250 MCM copper compression lugs.
- **Mechanical Connectors**  
Economical, reusable connectors in many styles in both copper and dual rated aluminum types.
- **Power Connector Tooling**  
Includes hand operated controlled-cycle, mechanical and hydraulic crimping tools. Also available are the *UNI-DIE™* CT-980 dieless tool and revolutionary CT-2001 battery operated crimping tool.

***PANDUIT* offers a variety of custom programs designed to permanently identify *PANDUIT* products for your specific application...**



- **Custom Marking**  
All *PANDUIT* stainless steel and brass products (ties, strapping, marker plates and tags) can be custom marked by one of two precise computer controlled systems (Laser or Embosser). These systems provide sharp, crisp, high quality legends.\* A variety of marking device accessories is also available for permanent identification of *PANDUIT* stainless steel and brass products.